



AHEAD

Speed & Security:

The Twin Pillars of a Successful Cloud Migration

Cloud migration is no longer just a technology decision — it's a business imperative. Enterprises today are striving to modernize operations, improve scalability, accelerate innovation, and reduce total cost of ownership. Cloud enables countless enhancements, but getting there is anything but simple.

At AHEAD, we've worked with hundreds of organizations, across many industries, and seen the same roadblocks surface time and again: slow decision-making, complex legacy environments, misaligned priorities, and rising concerns over security and compliance. The stakes are high. Yet success comes down to getting two things right: speed and security.

These aren't opposing forces. In fact, when addressed together — and early — they become reinforcing advantages.

The High Cost of Going Slow

There's a common misconception in enterprise IT that taking more time means reducing risk. But when it comes to cloud migration, inaction is often the bigger risk.

We frequently see transformation efforts stall for reasons like:

- **Inadequate visibility:** Many organizations don't know what assets they have, how they interconnect, or which applications are cloud-ready.
- **Internal misalignment:** IT, finance, security, and business units often disagree on migration priorities, architecture standards, or investment readiness.
- **Legacy complexity:** Mainframes, proprietary systems, and brittle integrations make the move feel daunting.
- **Decision fatigue:** With multiple cloud providers, modernization paths, and tooling options, organizations get stuck evaluating rather than acting.

The result is analysis paralysis, missed budget cycles, and strategic drift.

Meanwhile, more agile competitors are launching new products faster, hiring cloud-native talent, and delivering experiences your customers now expect by default.

Speed is not about rushing — it's about cutting through ambiguity with structured, data-driven planning. The goal isn't to migrate everything overnight; it's to build a migration strategy you can trust — and execute quickly.



Why Security Must Lead, Not Follow

In the rush to modernize, it's tempting to "figure out security later." But that mindset often leads to rework, audit findings, and executive scrutiny down the line.

True cloud security isn't just a matter of reapplying old tools in a new environment. It requires rethinking how security integrates with:

- **Identity and access management (IAM):** Implementing least-privilege access and federated identity across cloud and hybrid environments.
- **Data protection:** Encrypting data at rest and in transit, managing keys, and meeting compliance mandates such as HIPAA, PCI DSS, or FedRAMP.
- **Network segmentation and perimeter control:** Replacing traditional firewalls with cloud-native controls like security groups, service meshes, and microsegmentation.
- **Logging and monitoring:** Ensuring real-time observability and automated threat detection from day one.

Failing to design with security in mind doesn't just create immediate risk — it also accumulates **technical debt**. Every shortcut taken now becomes a problem to fix later, whether it's retrofitting IAM policies, re-architecting insecure VPC layouts, or cleaning up sprawling entitlements. Left unchecked, this debt compounds and slows down innovation, increases operational risk, and drives up costs over time.

The smartest organizations don't treat security as a gate — they **bake it into every layer of their migration strategy**, from landing zone architecture to CI/CD pipelines.

Getting Real About Cost

While agility is often the top driver, cost remains the first question in the boardroom. And it should be.

Cloud promises a shift from CapEx to OpEx, elasticity over fixed capacity, and operational overhead reduction through automation and managed services. But those benefits don't materialize by themselves — especially if you lift-and-shift without right-sizing or evaluating modernization opportunities.

Organizations that realize strong ROI from cloud do the following:

- **Baseline existing spend:** This includes infrastructure, licensing, labor, and facilities.
- **Model cloud scenarios:** Comparing lift-and-shift, re-platforming, and full modernization across AWS, Azure, and Google Cloud.
- **Quantify modernization value:** Understanding how containerization, serverless, or managed databases can reduce cost and improve developer velocity.
- **Explore funding options:** Leveraging programs like AWS MAP, Azure Migrate & Modernize, or Google Cloud RaMP to offset transition costs.
- **Forecast future-state operations:** Projecting operational savings from automation, reduced downtime, and simplified patching and security.

This level of cost modeling isn't just for the CFO — it's essential for building trust across executive stakeholders and ensuring your migration isn't just feasible, but fundable.

What Good Planning Looks Like

So how do you bring all of this — speed, security, and financial clarity — together in a way that works?

The answer lies in a structured planning phase that provides both technical insight and business alignment. That's exactly why we created our proprietary Rapid Assess offering — a 4–6 week assessment designed to build a migration and modernization roadmap grounded in real data, tailored to your environment, and aligned to your strategic goals.

We've guided thousands of workloads through this process. Here's what it includes:

Automated Discovery & Mapping

We use advanced tooling to inventory applications, infrastructure, usage patterns, and dependencies — often surfacing issues like zombie servers, underutilized VMs, or hidden risk areas.

Cloud Readiness Scoring

Each application is evaluated for migration complexity, modernization opportunity, and business criticality — helping you prioritize by both technical feasibility and business value.

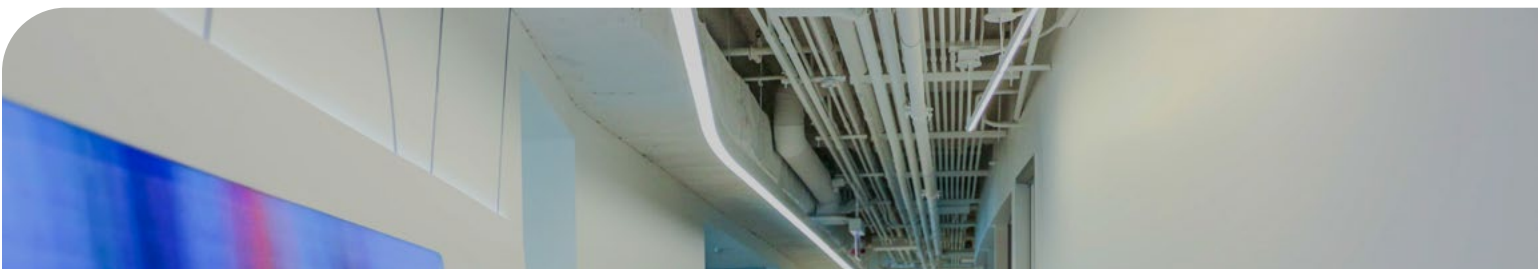
TCO & ROI Modeling

We develop a financial model comparing your current state to right-sized, cloud-optimized scenarios — including eligible vendor incentives and projected long-term savings.

Roadmap & Wave Planning

We group workloads into “migration waves,” sequenced by readiness, risk, and business impact — allowing you to move quickly on high-value workloads while planning deeper modernization in parallel.

This isn't a static report. It's a launchpad for action, designed to support budget approval, vendor selection, and immediate next steps.





Outcomes You Can Expect

Organizations that invest in structured, security-first migration planning see measurable results:

30-40%

reduction in operational overhead, by eliminating legacy inefficiencies



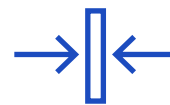
Optimized TCO through automation, right-sizing, and long-term planning

25-50%

faster time-to-cloud, by removing guesswork and rework



Strengthened compliance posture, ready for audits from day one



Accelerated decision-making with executive consensus around roadmap and ROI

More than anything, organizations gain confidence — the confidence to move forward boldly, knowing they're not leaving security, value, or clarity behind.

FINAL TAKEAWAY

Cloud Migration Is a Business Strategy

Moving to the cloud isn't just an IT initiative. It's a strategic transformation that touches every part of your business — and its success depends on how well you prepare.

If your organization is planning, revisiting, or accelerating its cloud journey, now is the time to ensure that speed and security are not afterthoughts, but foundations.

And if you're looking for a proven framework to get there faster and smarter, consider how AHEAD's Rapid Assess model might help. It's more than a planning tool — it's an accelerator for confident, secure transformation.

AHEAD

Want to learn more or see how your organization could benefit from a cloud readiness assessment?

Contact AHEAD to schedule a discovery session today.

National Hubs

CHICAGO

444 W. Lake Street
Suite 3000
Chicago, IL 60606

NEW YORK

500 5th Avenue
Floor 17
New York, NY 10010

ATLANTA

1117 Perimeter Center
W406
Atlanta, GA 30338

SAN FRANCISCO

2000 Crow Canyon Place
Suite 250
San Ramon, CA 94583